



BEAUFORT GREEN

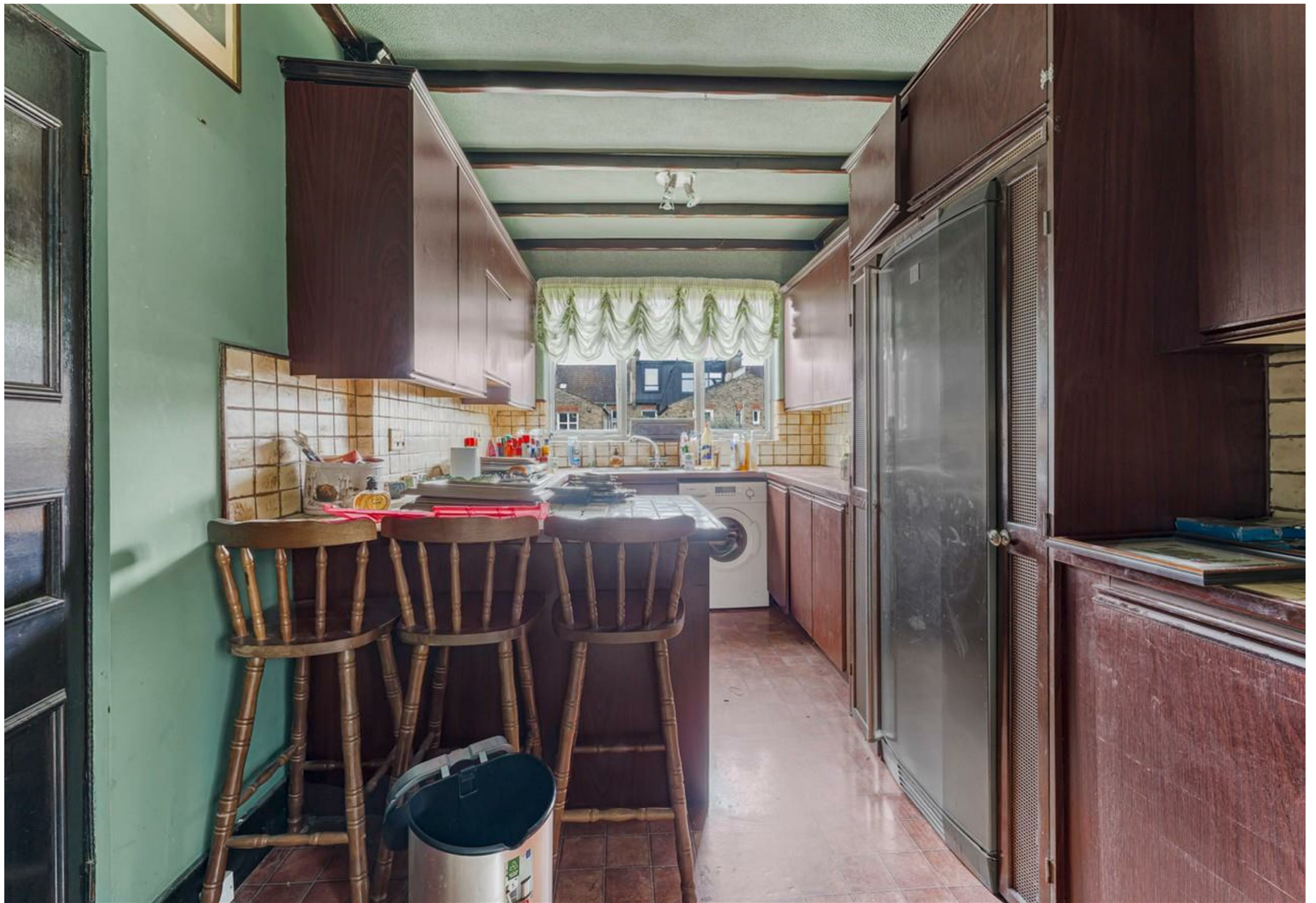


Inglethorpe Street, SW6

£700,000



A superb opportunity to acquire a large apartment in a highly desirable part of Fulham. Potential for further expansion with a loft conversion.





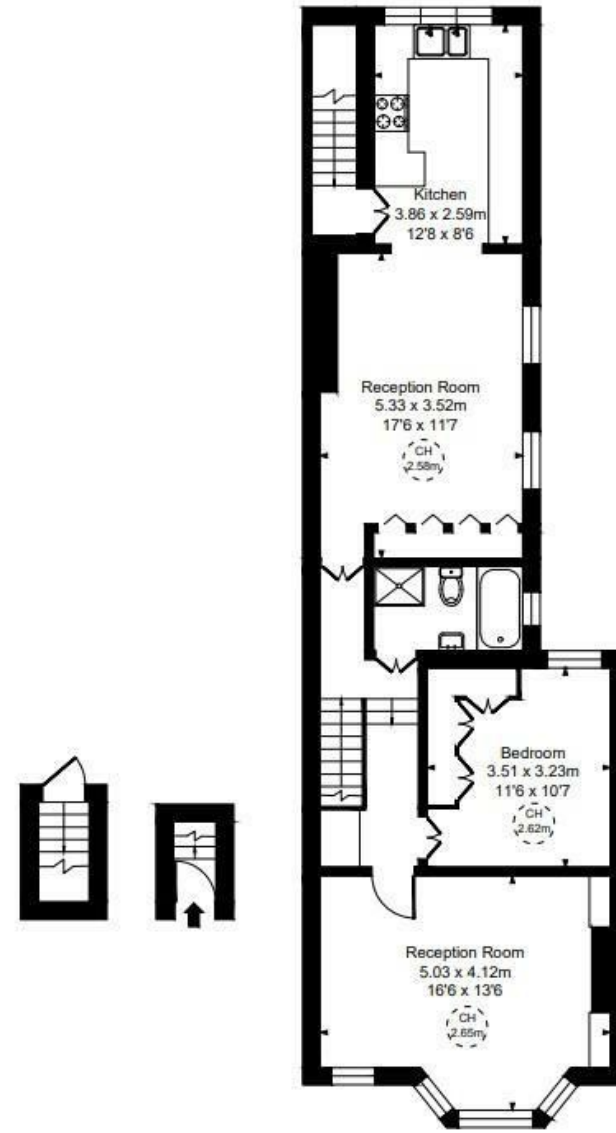
BEAUFORT GREEN

BEAUFORT GREEN

Inglethorpe Street, SW6
Approximate Gross Internal Area
73.86 sq m / 795 sq ft
(CH = Ceiling Heights)



At a Glance.



Ground Floor

First Floor

BEAUFORT GREEN

02074594100

charlie@beaufortgreen.co.uk

263 New Kings Road
London
SW16 1DB